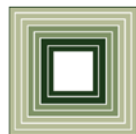


Joint Appropriations Committee on  
Justice and Public Safety

**Department of Public Safety:  
State Capitol Police and  
State Highway Patrol**

**March 26, 2019**



**FISCAL RESEARCH DIVISION**

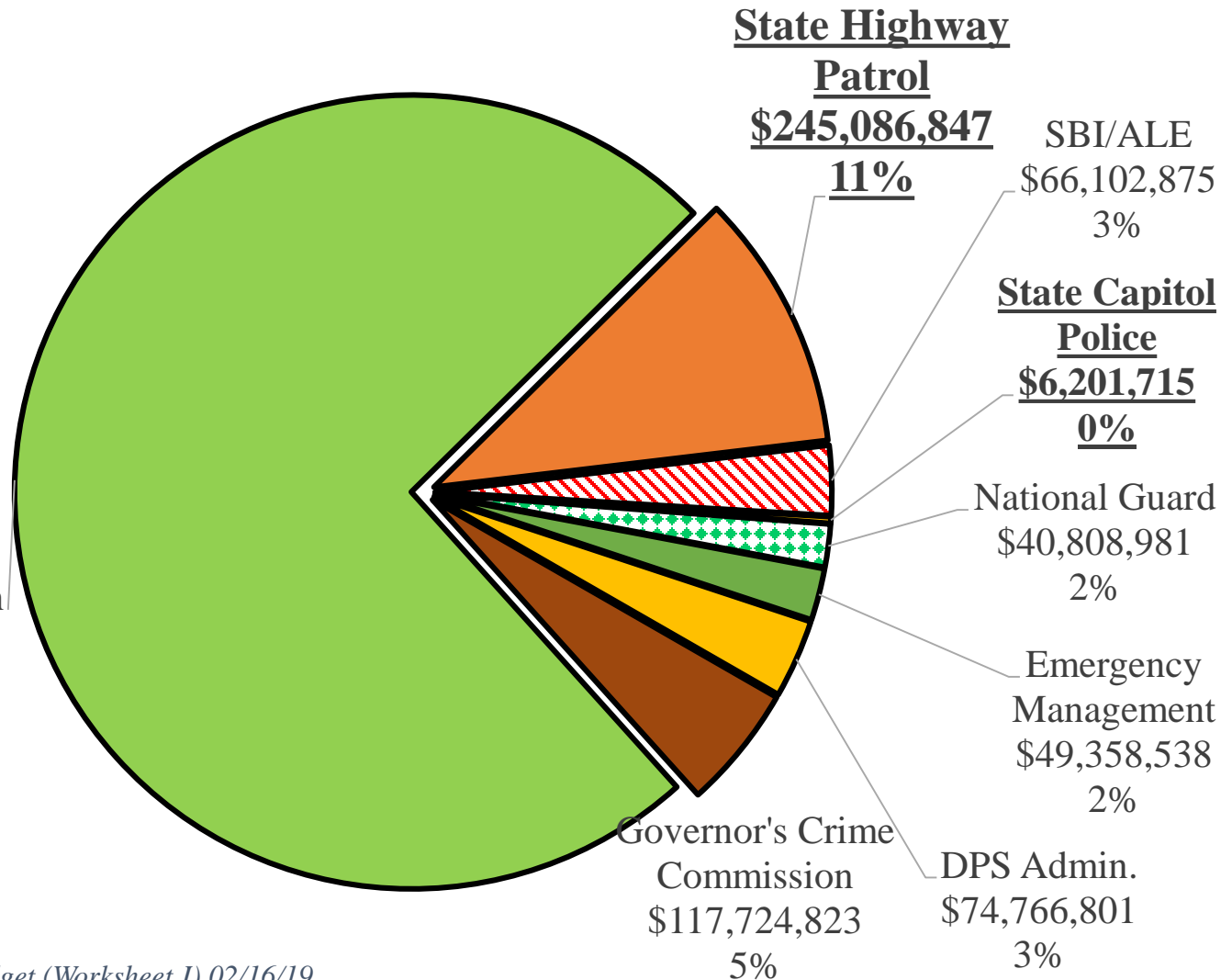
A Staff Agency of the North Carolina General Assembly

# FY 2019-20 DPS Base Budget

Total Budget:  
**\$2.3 billion**

Total Full-Time  
Equivalent (FTE)  
Employees:  
**24,590.12**

Adult Correction  
and Juvenile  
Justice  
\$1,732,736,569  
74%



Source: Recommended Base Budget (Worksheet I) 02/16/19

# State Capitol Police

## Total Requirements

**\$6,201,715**

Receipts  
\$4,192,542

Net General Fund  
Appropriation  
\$2,009,183

**Total FTE:**  
**93**

## FY 2018-19 Base Budget by Purpose

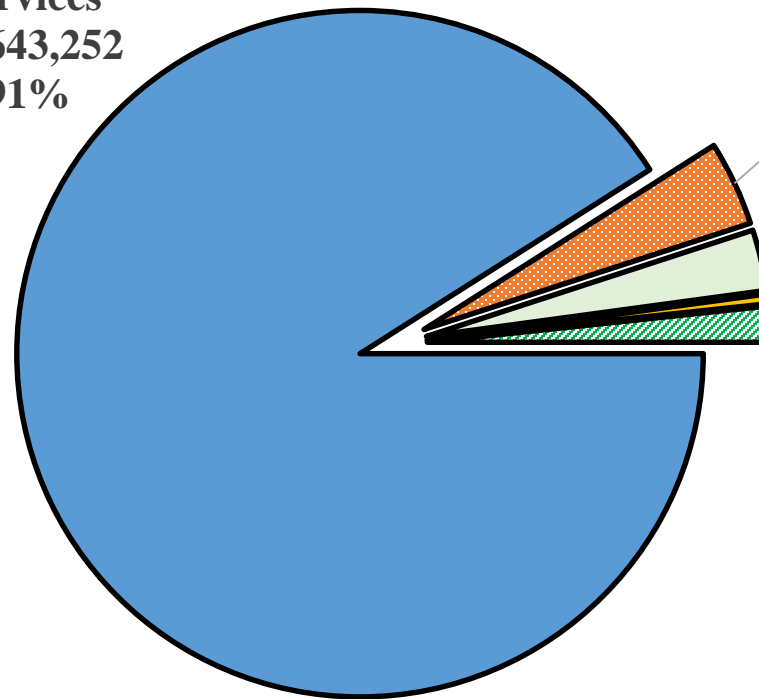
**Personal  
Services**  
**\$5,643,252**  
**91%**

**Purchased  
Services**  
**\$247,755**

**4% Supplies**  
**\$177,724**  
**3%**

**Property, Plant  
& Equipment**  
**\$28,422**  
**0%**

**Other**  
**\$104,562**  
**2%**



Source: Recommended Base Budget (Worksheet I) 02/16/19

# State Capitol Police

---

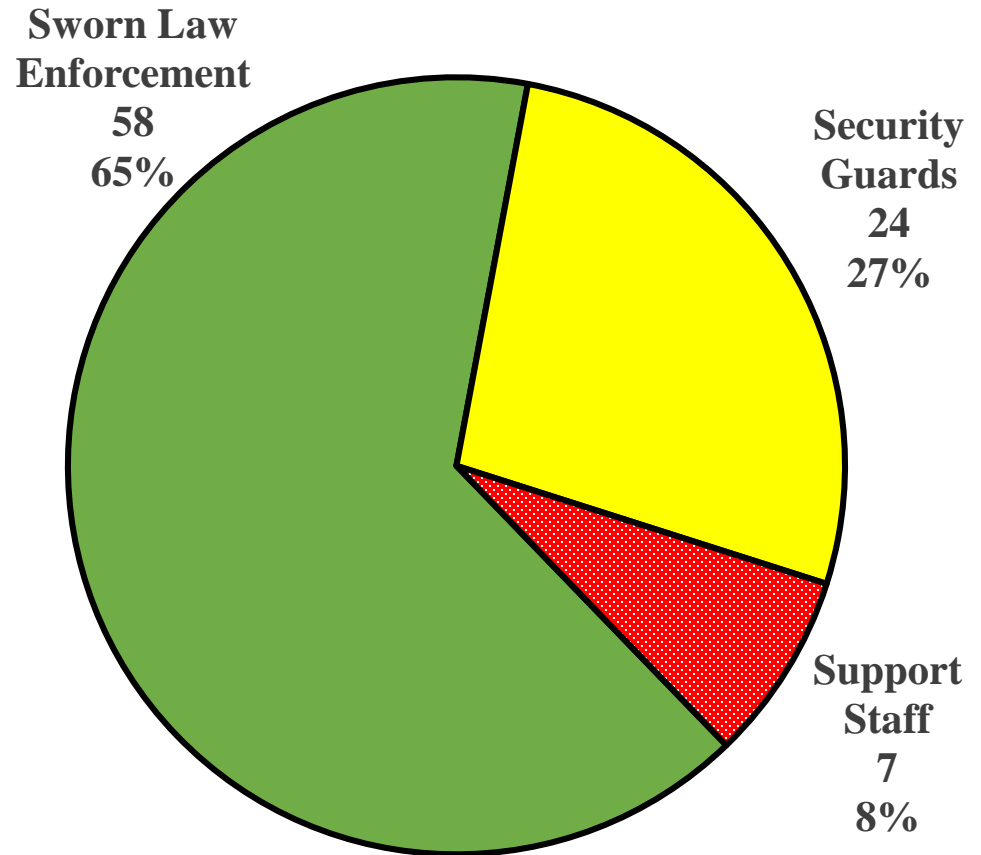
- G.S. 143B-900
- Jurisdiction: Same as a Raleigh police officer or Wake County deputy sheriff on property owned, leased, or maintained by the State in the city of Raleigh or Wake County



# State Capitol Police

- 93 FTE
  - Active security at 26 sites in Raleigh
  - Monitor 784 sites
    - 248 in Wake County, 536 elsewhere
  - 31 General Fund, 62 receipt supported

SCP Filled Positions



Source: State Capitol Police

# SCP Staffing

---

- Agency Supported Positions
  - Agencies support mix of non-sworn security guards and sworn officers
  - Hours of coverage for contracted positions depend on the contract
- General Fund Positions
  - Cover higher-risk sites, sometimes 24/7
- SCP Communications Center
  - 6 FTE
  - Monitor alarms for 784 sites
  - 24-hour coverage



# Questions

---



# NC State Highway Patrol

## State Highway Patrol Budget by Purpose

**Personal Services**  
**\$191,742,466**  
**78%**

**Purchased Services**  
**\$12,339,832**  
**5%**

**Supplies**  
**\$11,720,403**  
**5%**

**Property, Plant, Equipment**  
**\$19,475,831**  
**8%**

**Other**  
**\$9,626,258**  
**4%**

**Reserves**  
**\$182,057**  
**0%**

**Requirements**  
**\$245,086,847**

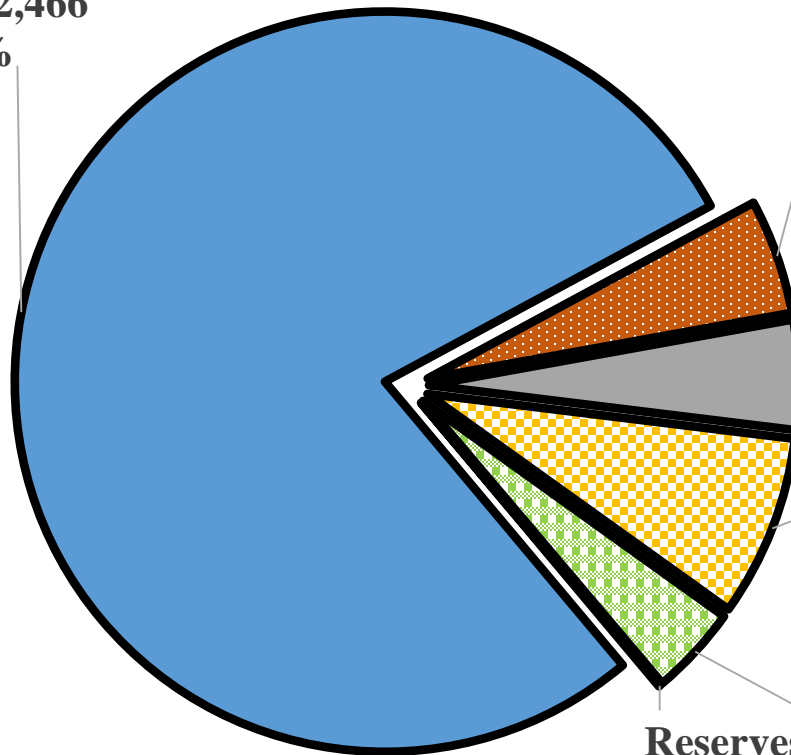
**Receipts**  
**(\$6,710,789)**

**Net General Fund Appropriations:**

**\$238,376,058**

**Total FTE:**

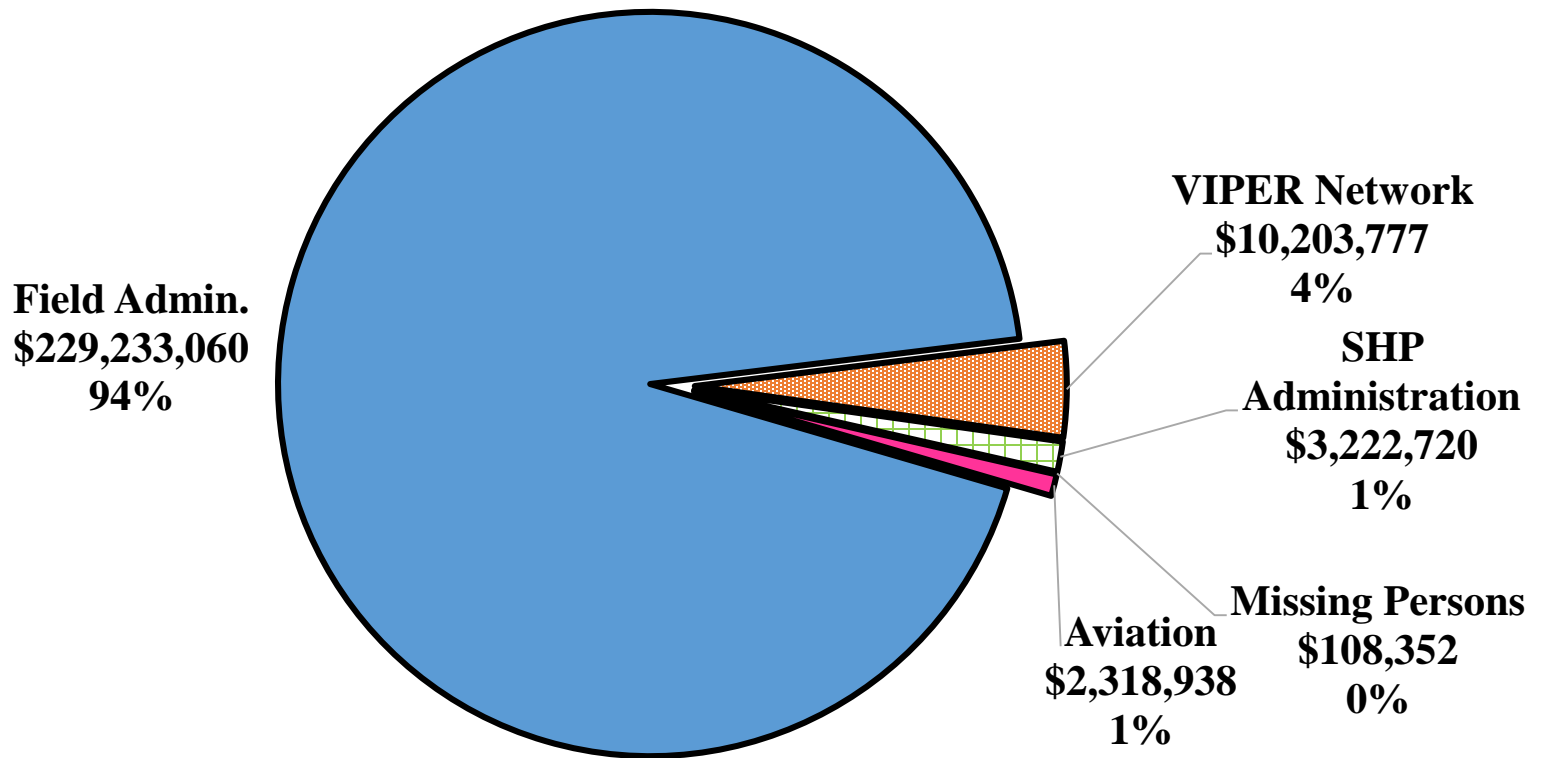
**2,174.75**



*Source: Recommended Base Budget (Worksheet I) 02/16/19*

# NC State Highway Patrol

## State Highway Patrol by Fund Code



Source: Recommended Base Budget (Worksheet I) 02/16/19

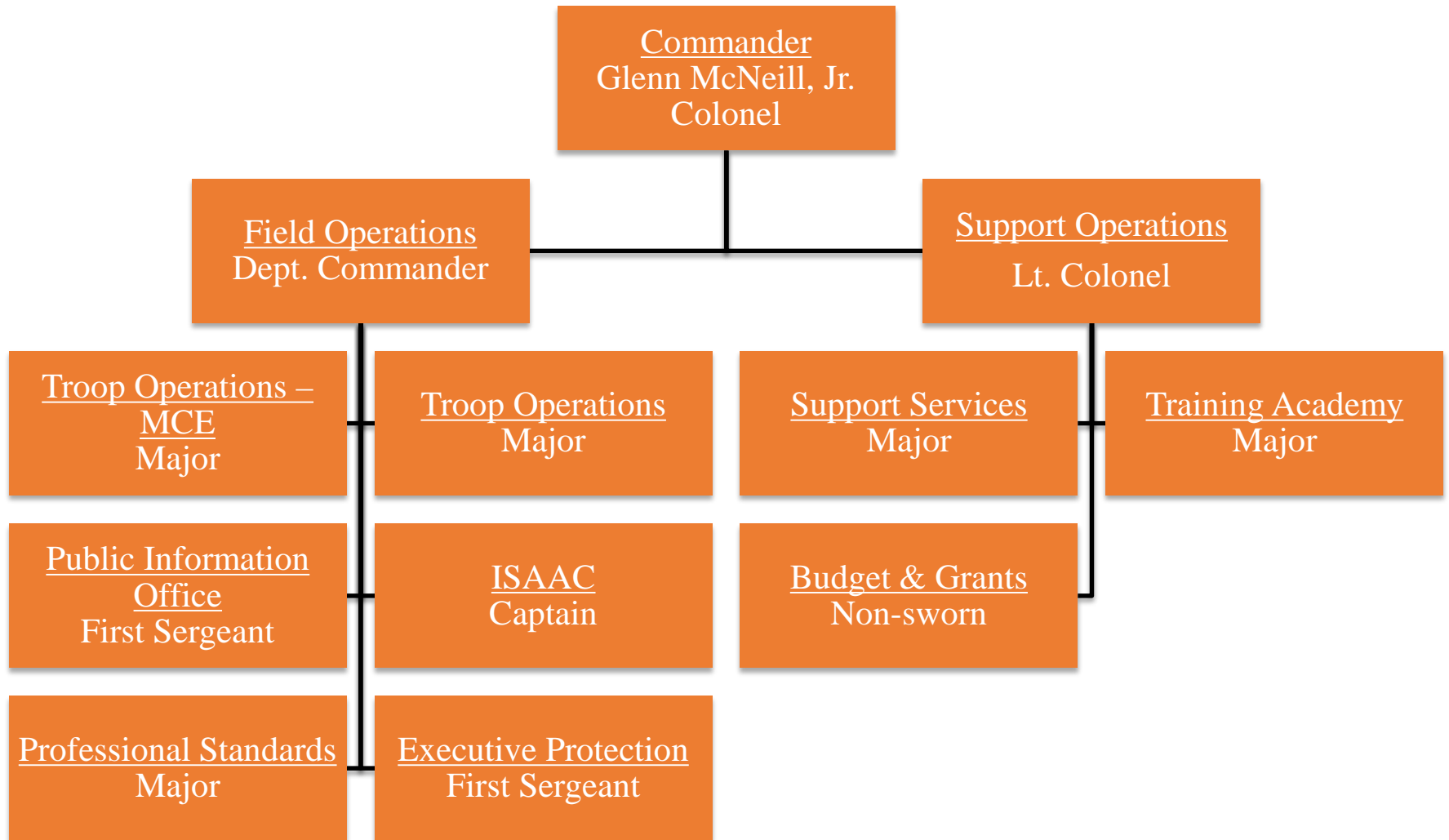
# NC State Highway Patrol

---

- Established in 1929
- Mission: To ensure safe, efficient transportation on our streets and highways, reduce crime, protect against terrorism, and respond to natural and manmade disasters.

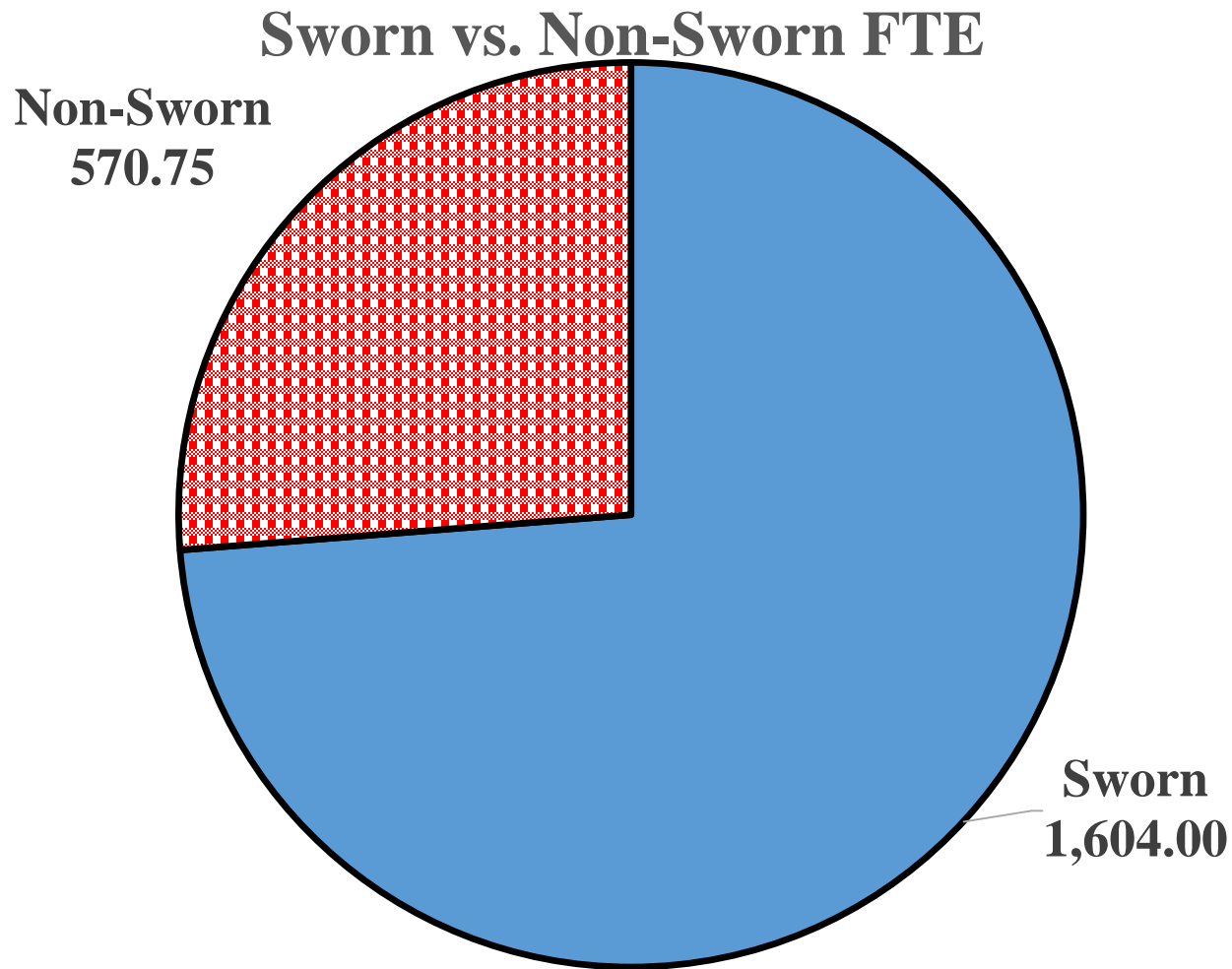


# NC State Highway Patrol

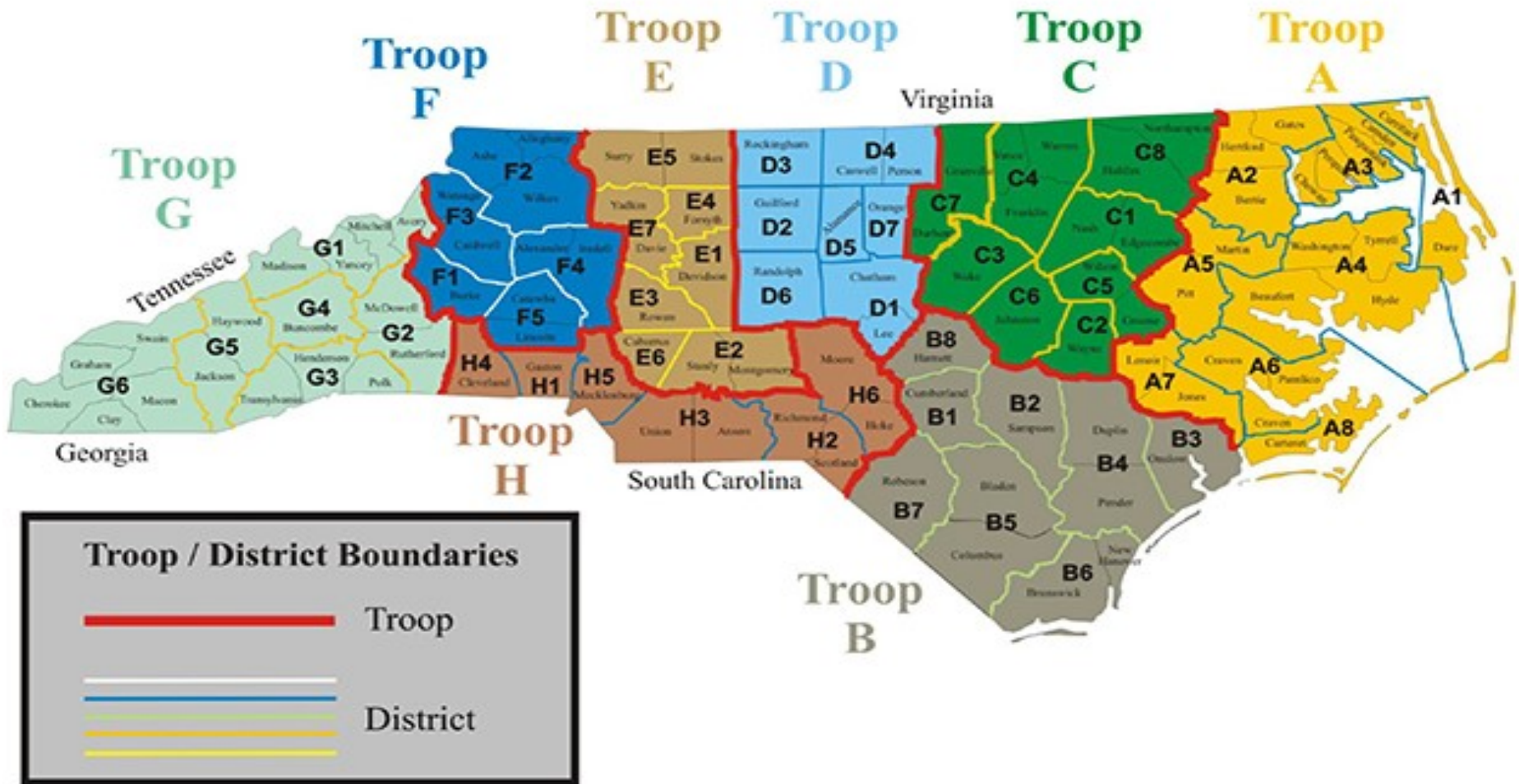


# Personnel

---



# NC State Highway Patrol



# Field Operations Hierarchy

## Troops

Captain

Lieutenant  
(2 or  
more)

## Districts

First  
Sergeant

First  
Sergeant

Sergeant

Sergeant

Sergeant

Sergeant

# Field Operations

- SHP Primary Duties
  - Enforce traffic laws
  - Investigate accidents and assist motorists
  - Provide traffic safety information
  - Commercial Vehicle enforcement



# Criminal Statistics

---

## Select Statistics, FY 2017-18

324,284 speeding tickets issued

152,733 warning tickets issued

19,910 DWI arrests

129,798 accident investigations

1,037 highway fatality investigations

### Drug Seizures:

40kg cocaine

300kg marijuana

7kg meth

# Motor Carrier Enforcement (MCE)

---

- Specialized units charged with enforcing commercial vehicle laws; can also help with other non-specialized troop activities as needed
- Operate 8 permanent weigh stations and mobile scales, among other duties



# SHP: Professional Standards

---

- Professional Standards
  - Internal Affairs
  - Inspections
  - Performance, Promotion
  - Research and Planning
- Accreditation through Commission on Accreditation for Law Enforcement Agencies (CALEA)
  - Current as of June 28, 2018



# Highway Patrol Training Academy

- Located at the Governor Morehead School for the Blind since 1976

- 9 buildings, 317 acres,  
Driving track, Heliport

- Basic School - 79 cadets

- 27 weeks, 1,047 hours
  - \$1.46m per class (\$17.6k/cadet)

- Fast-Track School – 50 cadets

- Cadets who already possess NC law enforcement certification
  - 12 weeks, 481 hours
  - \$482k per class (\$17.6k/cadet)



# Outfitting a New Trooper

Field Training Officer Program	\$2,893.12
Weapons (Pistol & Shoulder)	\$3,096.35
Taser & Cartridges	\$1,814.00
Basic Issue: Uniform, Supplies, Traffic Vest, Ballistic Vest	\$4,702.86
Technical Services Unit Equipment: Docking station, printer, modem, radio, etc.	\$20,094.64
Patrol Vehicle Upfit: Radios, console, lights, decals, etc.	\$1,103.00
Patrol Vehicle (Dodge Charger)	\$24,974.00
<b><u>Total</u></b>	<b><u>\$55,784.85</u></b>

# SHP: Fleet

---

## Vehicles

Enforcement vehicles: 1,716

Enforcement spares: 90

Training vehicles: 85

Support, parts, etc: 200

**Total Fleet: 2,091**

Charger Cost: \$24,241

Taxes and Tags: \$733

Upfit Costs: \$1,103

**Total Cost: \$26,077**



# Special Events and Security

---

- Traffic and security assistance supplied for ~160 events annually
- Examples:
  - 4 NASCAR/IHRA Races
  - 20-25 Civil Disturbance/Protest Events
  - World Equestrian Games
  - State Fairs
  - Haz-Mat/Nuclear Escorts
- Most expenses covered by SHP operating funds
  - Some reimbursements: commercial/haz-mat escorts, municipal events, etc.

# SHP: Aviation

---

- Ten pilots (sworn)
- Current fleet: 7 Bell helicopters
  - Four acquired from 1986-1999; Vietnam-era vehicles
  - Three acquired from 2008-2019; manufactured 2007/8
- Three of oldest helicopters to be demobilized



# SHP: Support Services

---

## Support Services - Logistics

- Mechanics and Auto Body Shop
- Radio Engineers
- Motor Fleet
- Equipment, supplies, uniforms

## Support Services – Technical Services Unit

- All SHP computer systems
- Laptop and desktop support
- Wireless devices

## Support Services – Personnel and Benefits

- Workers Comp
- Retirement
- Civilian New Hire
- HR-Payroll
- Leave of Abence



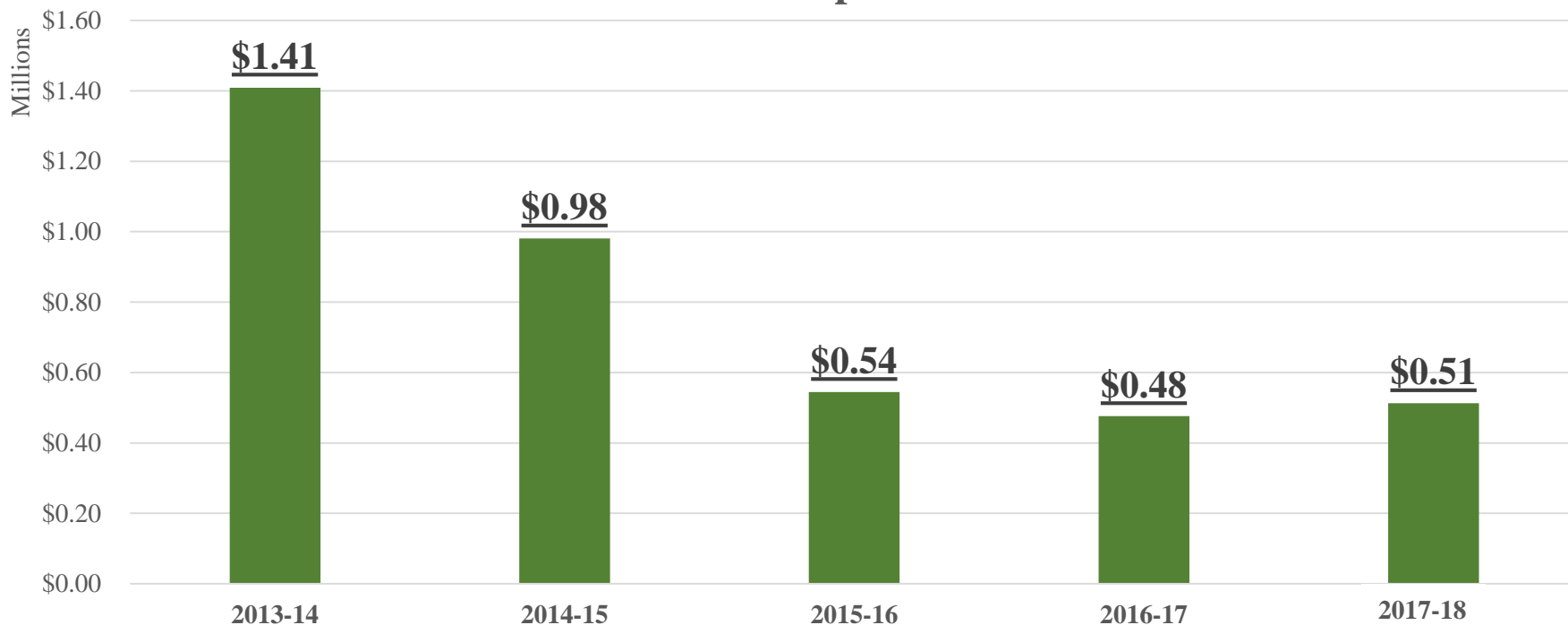
*Source: NC DPS*

# Seized Assets

Under federal law, can be used to purchase:

- Operations and Investigations
- Equipment
- Training and Education
- Facilities
- Travel and Per Diem

Seized Asset Expenditures



Source: SHP

# Issue: Hiring and Retention

- Current trooper vacancies: 188
  - Equivalent to a Troop
  - Average turnover: 7/month, 84/year
  - 138 Cadets scheduled for Academy this year
- New salary schedule with accelerated raises



# New Salary Schedule

Estimated Trooper Salary Progression			
Years of Experience	Previous Schedule	New Schedule	% Δ
0	39,189	44,000	12.3%
1	41,148	46,860	13.9%
2	43,206	49,906	15.5%
3	47,634	53,150	11.6%
4	50,016	56,605	13.2%
5	52,517	60,284	14.8%
6	57,900	64,202	10.9%
7	60,795	64,202	5.6%
8+	62,875	64,202	2.1%

# VIPER

- **VIPER: Voice Interoperability Plan for Emergency Responders**
  - Operated and maintained by the State Highway Patrol; Allows inter-agency communication during emergencies
  - State/local Partnership: State pays for towers, Locals pay for their radios
  - 241 Tower sites planned (227 completed or under construction)
    - ~100,000 VIPER system IDs from over 1,500 agencies
- Cost to date - \$259 million (\$112m federal; \$147m State)
- FY 2018-19: NCGA appropriated \$16.5m for upgrades
  - 2018 PED Report recommends additional \$21.3m over next several years



# Recent Budget Actions

---

- FY 2017-18 Budget
  - \$200,000 reduction to salary reserve
  - Telecommunicator Positions: \$433k, 8 FTE
  - VIPER Operating Costs: \$678,077 (R)
    - Insurance, fuel, lighting systems
  - VIPER Construction Change
    - Moved \$4.16m from Recurring to Nonrecurring
    - VIPER FY 2019-20 base budget therefore reduced by \$4.16m

# Recent Budget Actions

---

- FY 2018-19 Budget
  - New pay plan for Troopers: \$7.2m (R)
    - Increased starting pay to \$44,000
    - 6.5% annual salary increases for first 6 years of employment
    - New Master Trooper max pay: \$64,202
  - VIPER System Upgrades: \$16.5m (NR)
    - Upgrades to base station hardware, tower security, long-term software and support
- 2019 Governor's Budget recommends VIPER Reserve

# Questions

